

Stainless steel radiator straight 700 x 600

BLEED VALVE

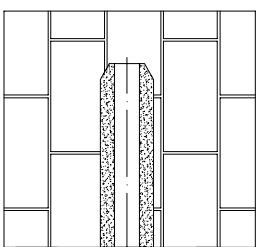


diagram B

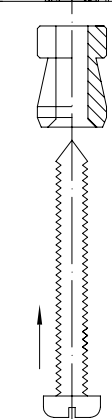
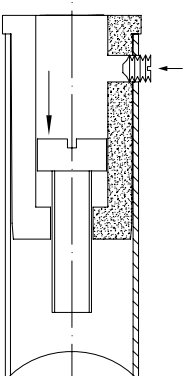


diagram C



T:1/2" Tapping

D:Dead end

Pipes centres: 50 mm

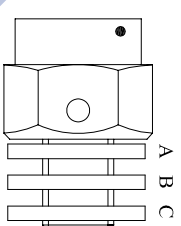


diagram E

- A: Metal washer
- B: Coloured fibre washer
- C: Translucent silicone washer

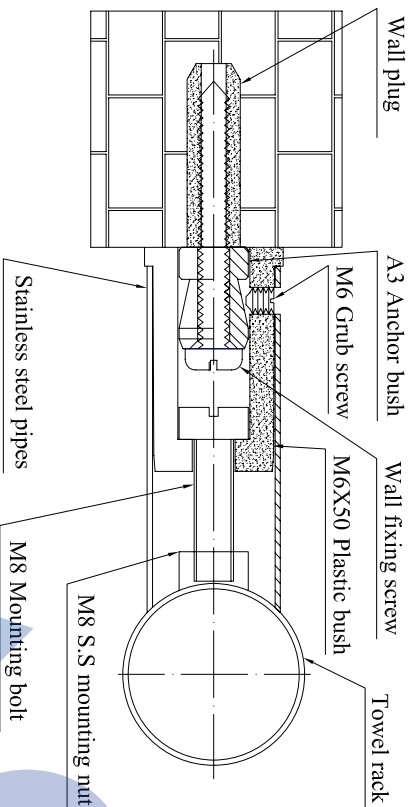


diagram D

PARTS:	Quantity	Description
	1	304 stainless steel ladder radiator
	4	Stainless steel mounting brackets
	4	M8 bracket to rail mounting bolts
	4	M6 Grub Screws
	4	A3 anchor bushes
	4	Wall plugs
	4	65mm wall fixing screws

Installation

- 1).Secure the mounting bracket to the radiator M8 nuts using the M8 mounting bolts.(diagram C)
- 2).Position the radiator onto the wall and mark out the fixing positions.(diagram A)
- 3).Drill 4xØ9 holes into the wall.(diagram B)
- 4).Insert the wall plugs and using the 65mm wall screws secure the A3 anchor bush to the wall.(diagram B)
- 5).Place the radiator and its mounting brackets onto the A3 anchor bushes and secure into position using the M6 grub screws.(diagram D)
- 6).CAUTION:Please ensure that the bleed valve washer are placed in the correct order as indicated in.(diagram E).Do not over tighten.

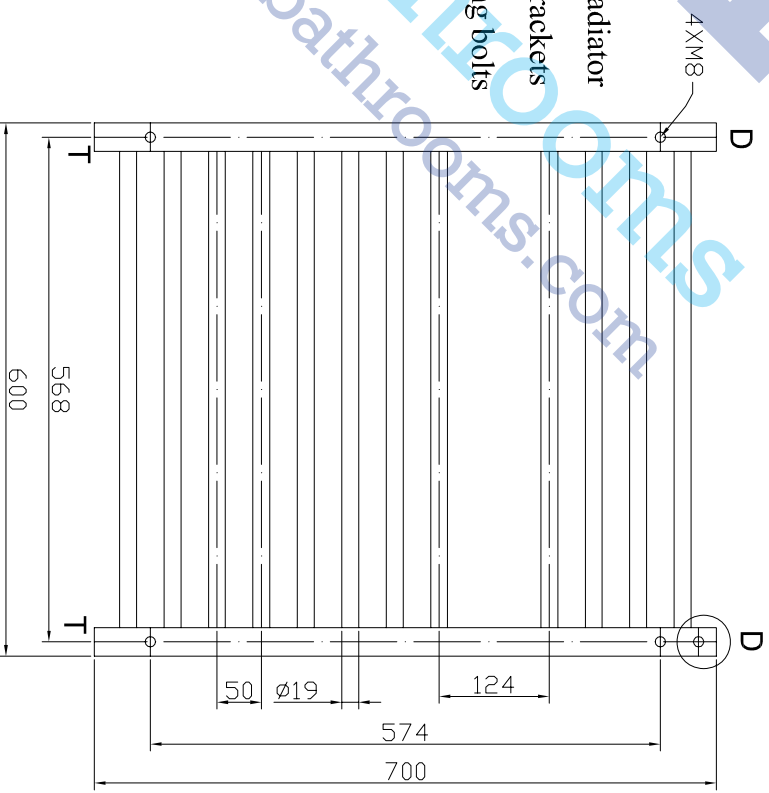
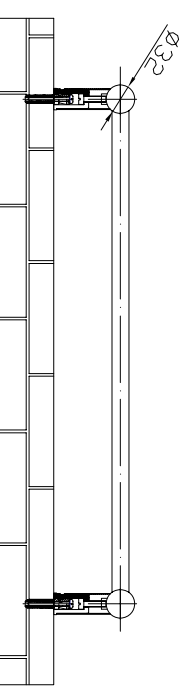


diagram A



Model: TWSSST 076