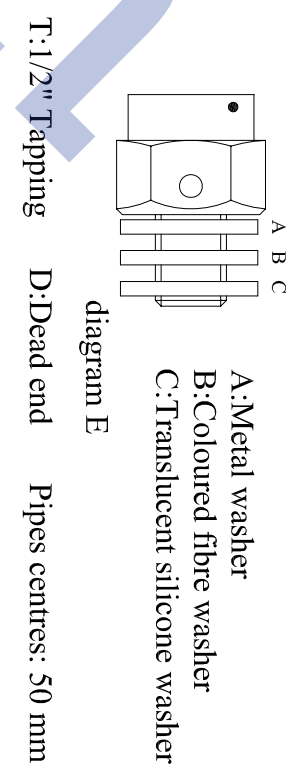
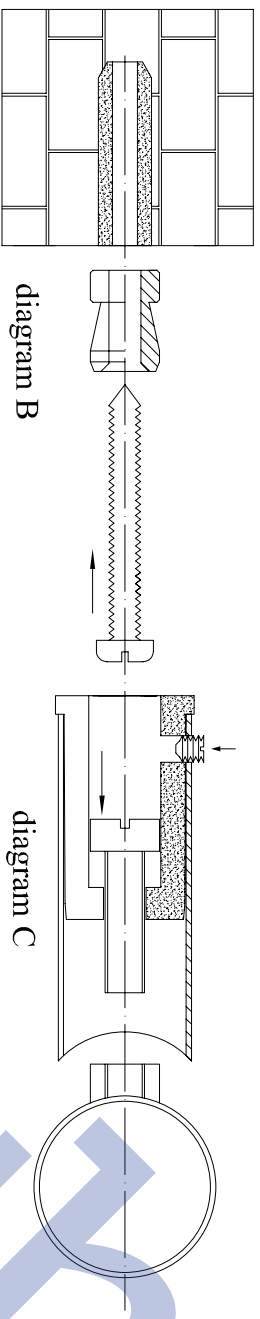


Stainless steel radiator straight 1200 x 600

BLEED VALVE



PARTS:	Quantity	Description
304 stainless steel ladder radiator	1	
Stainless steel mounting brackets	4	
M8 bracket to rail mounting bolts	4	
M6 Grub Screws	4	
A3 anchor bushes	4	
Wall plugs	4	
65mm wall fixing screws	4	

Installation

- 1). Secure the mounting bracket to the radiator M8 nuts using the M8 mounting bolts. (diagram C)
- 2). Position the radiator onto the wall and mark out the fixing positions. (diagram A)
- 3). Drill 4xØ9 holes in the wall. (diagram B)
- 4). Insert the wall plugs and using the 65mm wall screws secure the A3 anchor bush to the wall. (diagram B)
- 5). Place the radiator and its mounting brackets onto the A3 anchor bushes and secure into position using the M6 grub screws. (diagram D)
- 6). **CAUTION:** Please ensure that the bleed valve washer are placed in the correct order as indicated in. (diagram E). Do not over tighten.

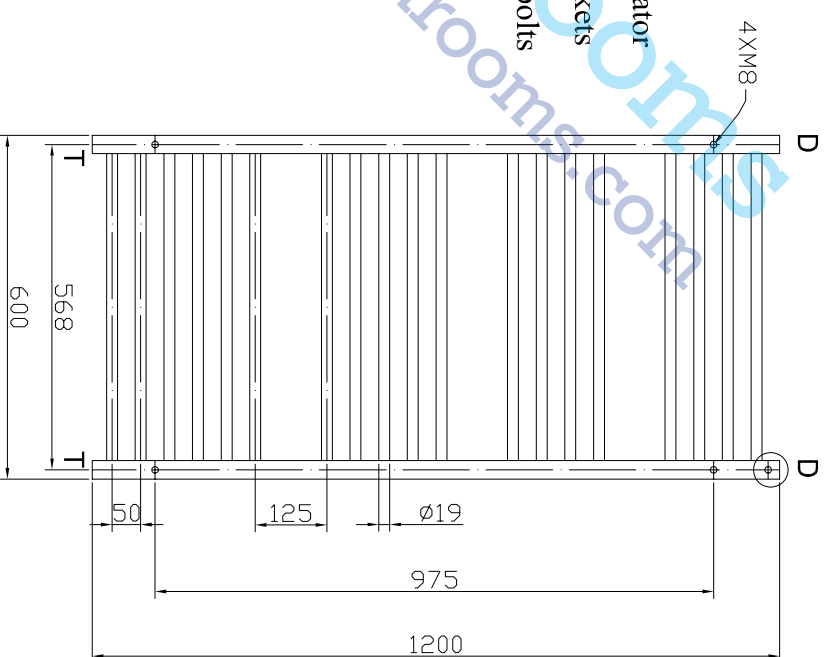


diagram A

